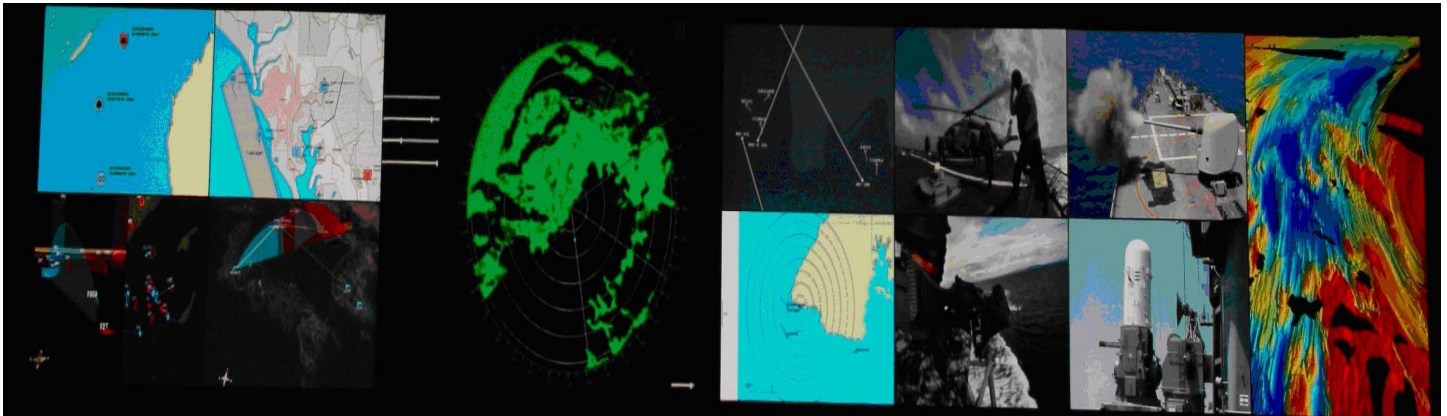


MULTI-MEDIA DISPLAY (M2D) SYSTEM (32- AND 42-INCH)



The VDC DS Multi-Media Display (M2D) System provides a state-of-the-art command and control and situational awareness display capability. The M2D System can be installed in any environment; to include as a fully ruggedized option for foundation mounting aboard mobile platforms (e.g., naval vessels).

The M2D System displays a single, seamless image across a rigid screen system, utilizing a pair of feedback sensors and specialized software to calibrate the imaging system. The system also provides a power interface module with conditioning and overload protection.

The M2D Driver Package (M2D-DP) software provides graphics rendering that supports *in situ* image processing operations such as, but not limited to, geometry correction, image stitching and edge blending between multiple projectors. The M2D's available resolution is the composite pixel space of all attached projectors less those pixels used for image processing. The created virtual display space is made available to a server's Linux Operating System (LOS) as a single (warped and blended) monitor. Any conventional program that can be viewed on a computer's monitor, to include live internet streaming, can be projected onto the virtual display space.

Complete Visual System Designed to Your Requirements

- Resolution
- Contrast
- Brightness
- Budget

Custom Screen

- Projectors can be ganged to cover a large variety of wall dimensions
- Optimized screen gain for your system needs



Projector Options include the following:
 Marquee[®] HD SSL[™] 7000 (left) and
 Marquee[®] HD SSL[™] 7000 Ruggedized (right)

42- and 32-inch M2D Projector Specifications

Display				
Technology	TI™ DarkChip® DLP®	Brightness Uniformity	Full Field w/Extreme Short Lens >80%	
Illumination Source	Solid State Luminus PlatLight	Contrast	Full On/Off >2000:1	
Native Resolution	1920 x 1080p HD	Gamma	CRT, Film, Video, Bright or Graphics	
Aspect Ratio	Native 16:9 / 16:10; 4:3, 5:4, selectable options	Colors	16,777,216 Colors	
Resolution Support	Custom Resolutions on Request	Color Gamut	Auto, REC709, SMPTE-C, EBI or Native	
Brightness	~400 ANSI Lumens	Color Modes	32 Total (4 Temps X 4 Gamuts X 2 Modes)	
Optics		Connectivity		
Available Lenses	Fixed Extreme Short Throw, Image Fixed size 42" H X 74.67" W at Nominal 16.5" Throw Distance	Video / Computer	2 X DVI, VGA	
MTF – Pixel On / Off, Native Resolution	Typically >50% (Lens Dependent)	Control and Command	RS232C, RJ45, IR Remote with Optional Hard-wired Remote	
System/Server Requirements				
Lens Shift	Manual: Extra Fine Grain Only, Keystone Adjustment ±15%	Required Operating System (OS)	Linux OS	
General				
Standards / Certifications	RHoS, UL / cUL, CB, CE, FCC	Weight	~32 lbs (14.5kg)	
Acoustic Noise	32 dB	Line Voltage	Low Nominal: 100-120V High Nominal: 200-240V	
Size	Height	Inrush Current	75A	
	Width		Altitude	Operating Sea Level to 10,000ft
	Depth			Non-Operation Sea Level to 40,000ft (storage)
Operating Range	Operating	Calculated MTBF	>50,000 Hours	
	Non-Operation		Warranty	2 Years (Extended Available)
	Humidity			<90% (Non-Condensing)
Power	<250W			
Ruggedized Options Comply with the Following Military Specifications and Standards (MIL-S / MIL-STD)				
MIL-S-091D, MIL-STD-167-1, MIL-STD-461E, DOD-STD-1399, and MIL-STD-810F Method 506.4 Procedure III				

Due to constant research, product specifications are subject to change without notice.
Contact VDC Display Systems for information on additional options and accessories.



M2D Wall (rear view), ruggedized version, with Extreme Short Throw Projectors

VDC Display Systems

7177 N. Atlantic Ave., Cape Canaveral, Florida 32920 USA
Tel: +321.784-4427 | Fax: +321.784-6617 Email: Sales@vdcds.com

www.vdcds.com